



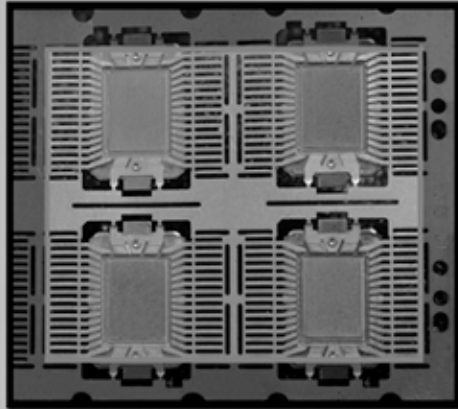
# COMPOSIDIE INC

1295 Route 380, Apollo, PA 15613-9658

Phone: (724) 727-3466 Fax: (724) 727-3788

Visit us at [www.composidie.com](http://www.composidie.com)

MACHINING ♦ TOOLING ♦ STAMPING ♦ ETCHING ♦ PLATING ♦ ASSEMBLY



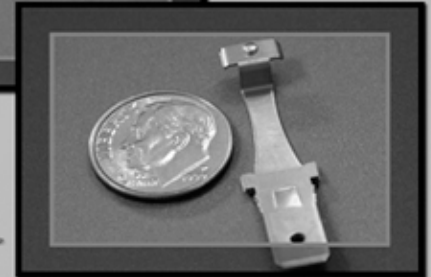
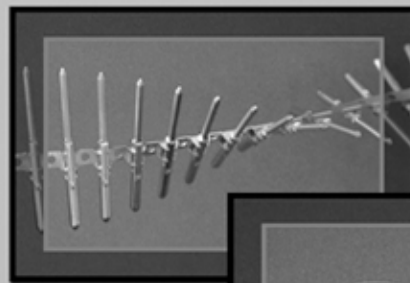
## AUTOMATED & MANUAL IN-DIE ASSEMBLY

Composidie can assemble combinations of purchased parts and parts manufactured in-house to produce an assembled product. Vertical integration allows us to combine stamped metal parts, etched parts or plastic components to produce your value-added assemblies and sub-assemblies.

Composidie's in-house assembly shortens the supply chain, reduces freight costs and eliminates quality issues and "finger pointing" common in other operations. Most importantly, it drives down the total cost of any project.

Our assembly line capabilities include:

- Laser Etching
  - Part Mark/Identity
  - Oil Grooves
- Packaging
  - Product Interleaving
  - Bagging & Labeling
- Low-Volume Manual Assembly
- Semi-Automated Assembly
- High-Volume Fully Automated Assembly
  - Heat Sink Attachment
  - Precious Metal Contact Feeding & Insertion
  - Wire-to-Pin Bandolier Strips
  - In-Die Tapping
  - Silver Wire Contact Insertion



## TAPE, CUT & DOWNSET CAPABILITIES

We have the ability to fasten tape to high lead count products to maintain product integrity throughout our customers' assembly process.

Our cut and downset equipment enables us to cut reel-to-reel product into specified strip lengths and downset a die pad according to specifications. This ensures compatibility with customer process equipment and proper wire bondability.

We design and build tooling internally to ensure quality, reduce leadtime and minimize downtime for our customers.

## COMMITMENT TO QUALITY

Quality assurance begins in the design phase, when potential manufacturing problems are identified, evaluated and solved. During production, the Composidie quality plan enables us to monitor each stage to ensure delivery of parts and dies that consistently meet the specifications and expectations of our customers.

Composidie Inc. is ISO 9001:2000 registered, RoHS compliant and TS 16949 capable.

