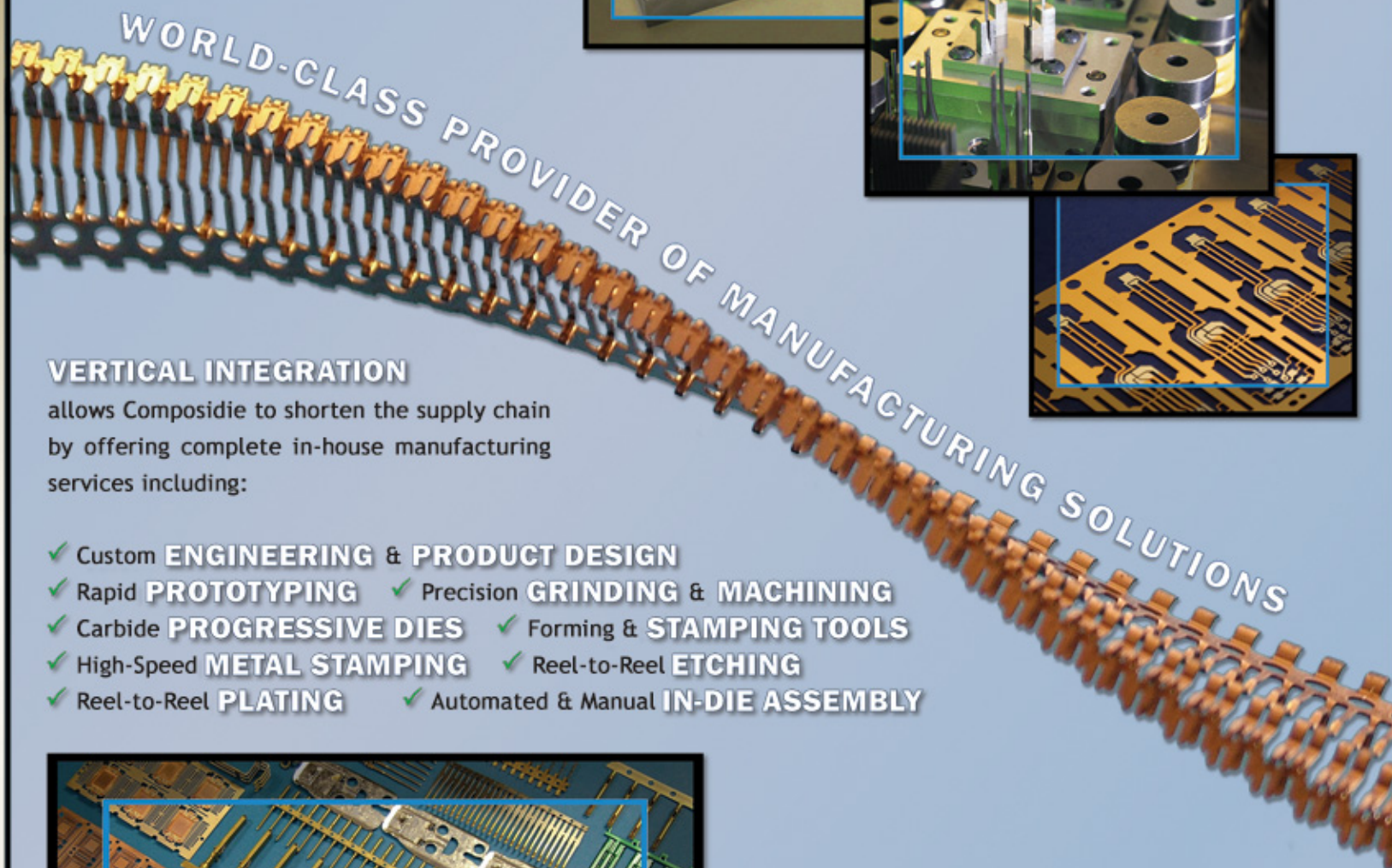
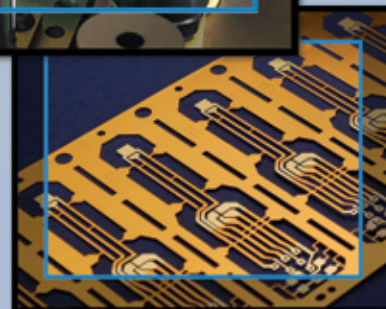
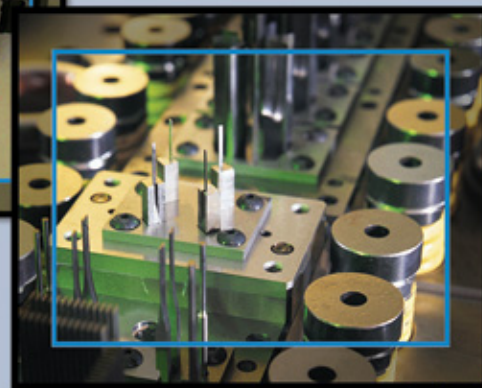
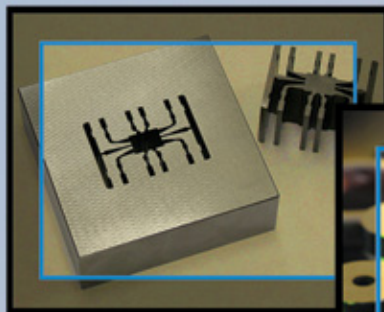


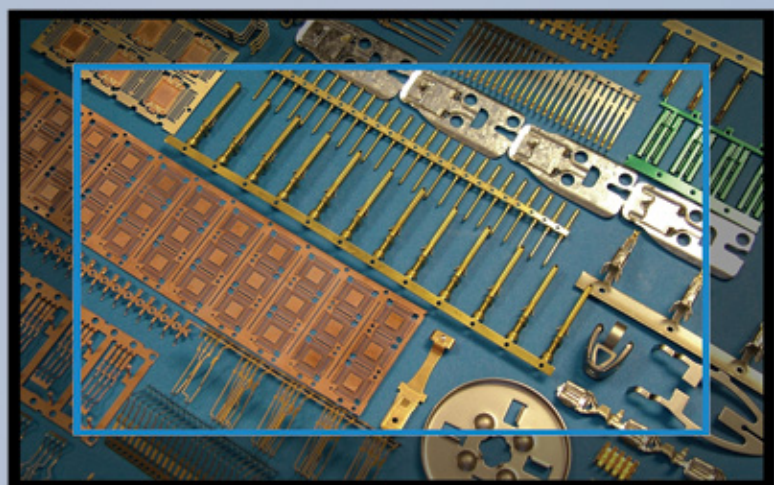
In today's global marketplace, you need a **STRATEGIC PARTNER** that combines the flexibility and attention to detail of a small manufacturer with the convenience and cost benefits of a full-service market leader.



VERTICAL INTEGRATION

allows Composidie to shorten the supply chain by offering complete in-house manufacturing services including:

- ✓ Custom **ENGINEERING & PRODUCT DESIGN**
- ✓ Rapid **PROTOTYPING** ✓ Precision **GRINDING & MACHINING**
- ✓ Carbide **PROGRESSIVE DIES** ✓ Forming & **STAMPING TOOLS**
- ✓ High-Speed **METAL STAMPING** ✓ Reel-to-Reel **ETCHING**
- ✓ Reel-to-Reel **PLATING** ✓ Automated & Manual **IN-DIE ASSEMBLY**



A shorter supply chain cuts out hassles and "finger pointing" while saving you time and money.

At Composidie, experience, technology and **INNOVATION** fuel our engineering and product design capabilities. Tap into our manufacturing expertise in any combination your solutions require and experience the power of vertical integration.

THE COMPOSIDIE FAMILY OF COMPANIES

Composidie started designing and building progressive carbide stamping dies in 1971 with three employees. Four decades of growth including internal expansion and the addition of independent companies with established reputations as leaders in their fields have made Composidie the full-service manufacturing leader it is today. Our winning team features:

CTE INC.

Specialty: Die Design & Build; High-Speed Stamping

EDM SERVICES INC.

Specialty: High-Precision Machining, Grinding & Wire/EDM

LEADING TECHNOLOGIES INC.

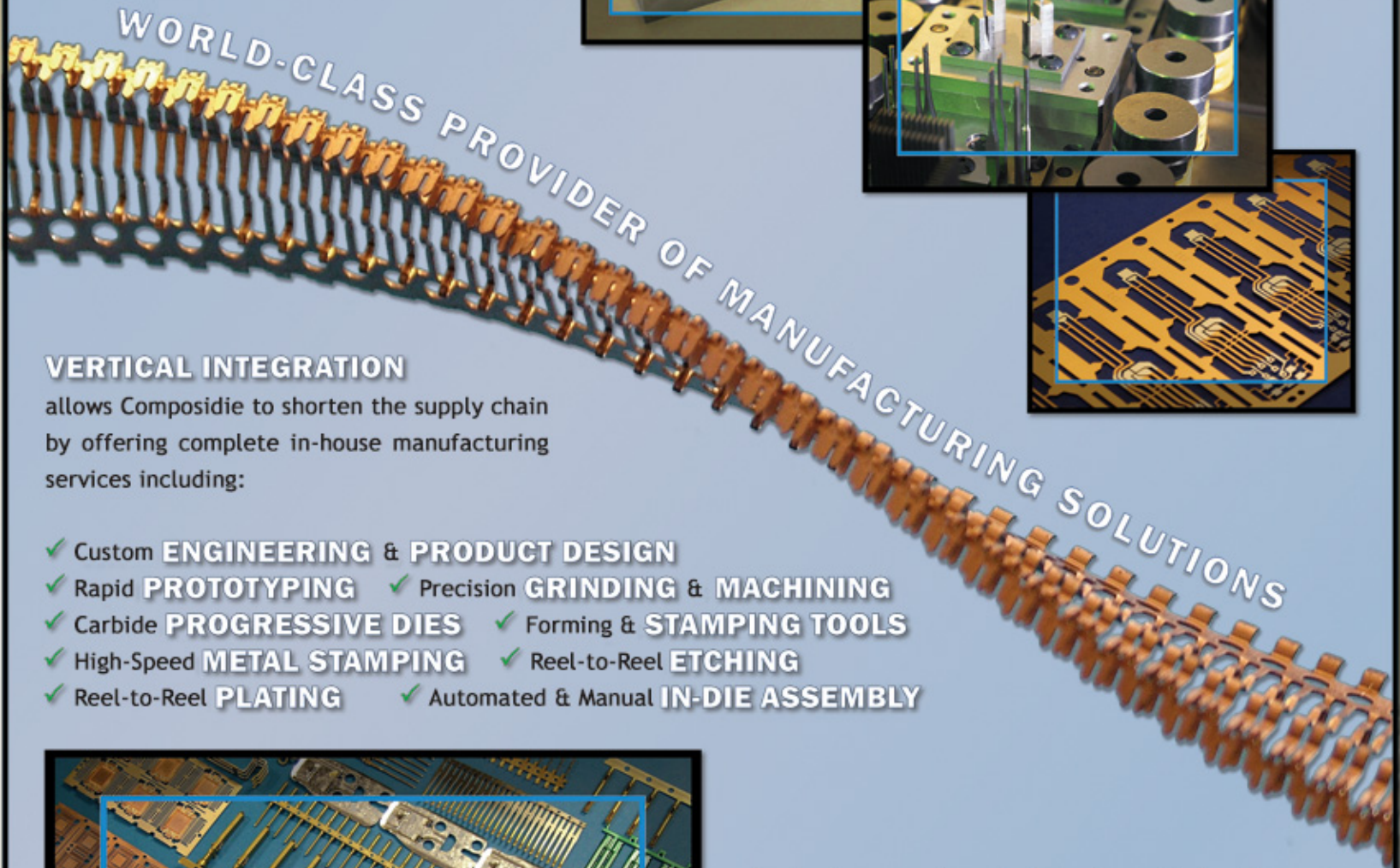
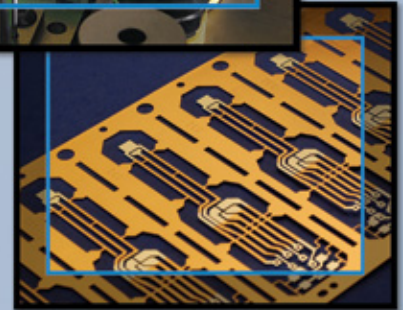
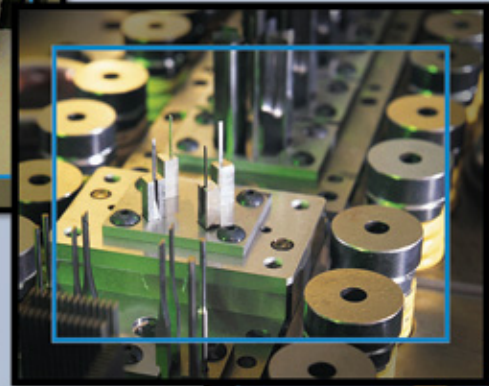
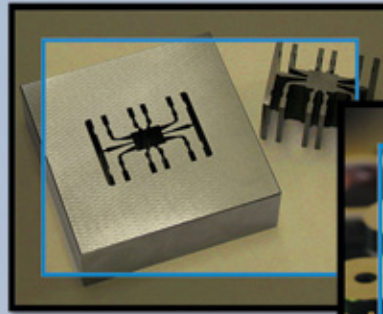
Specialty: Reel-to-Reel Etching & Plating; Product Finishing

TOOLEX MANUFACTURING

Specialty: High-Precision Machining, Grinding & Wire/EDM

Each outstanding in its own specialty, these companies work seamlessly with Composidie to meet our clients' every need.

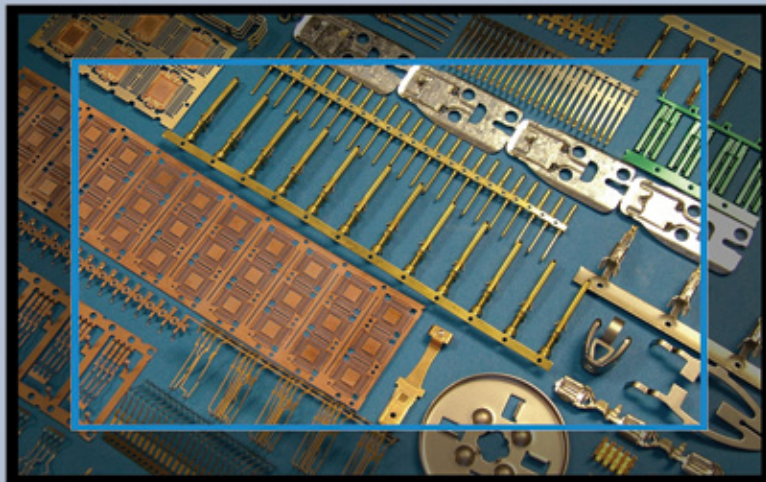
In today's global marketplace, you need a **STRATEGIC PARTNER** that combines the flexibility and attention to detail of a small manufacturer with the convenience and cost benefits of a full-service market leader.



VERTICAL INTEGRATION

allows Composidie to shorten the supply chain by offering complete in-house manufacturing services including:

- ✓ Custom **ENGINEERING & PRODUCT DESIGN**
- ✓ Rapid **PROTOTYPING**
- ✓ Precision **GRINDING & MACHINING**
- ✓ Carbide **PROGRESSIVE DIES**
- ✓ Forming & **STAMPING TOOLS**
- ✓ High-Speed **METAL STAMPING**
- ✓ Reel-to-Reel **ETCHING**
- ✓ Reel-to-Reel **PLATING**
- ✓ Automated & Manual **IN-DIE ASSEMBLY**



A shorter supply chain cuts out hassles and "finger pointing" while saving you time and money.

At Composidie, experience, technology and **INNOVATION** fuel our engineering and product design capabilities. Tap into our manufacturing expertise in any combination your solutions require and experience the power of vertical integration.

THE COMPOSIDIE FAMILY OF COMPANIES

Composidie started designing and building progressive carbide stamping dies in 1971 with three employees. Four decades of growth including internal expansion and the addition of independent companies with established reputations as leaders in their fields have made Composidie the full-service manufacturing leader it is today. Our winning team features:

CTE INC.

Specialty: Die Design & Build; High-Speed Stamping

EDM SERVICES INC.

Specialty: High-Precision Machining, Grinding & Wire/EDM

LEADING TECHNOLOGIES INC.

Specialty: Reel-to-Reel Etching & Plating; Product Finishing

TOOLEX MANUFACTURING

Specialty: High-Precision Machining, Grinding & Wire/EDM

Each outstanding in its own specialty, these companies work seamlessly with Composidie to meet our clients' every need.