

# COMPOSIDIE INC

1295 Route 380, Apollo, PA 15613-9658

Phone: (724) 727-3466 Fax: (724) 727-3788

Visit us at [www.composidie.com](http://www.composidie.com)

MACHINING ◆ TOOLING ◆ STAMPING ◆ ETCHING ◆ PLATING ◆ ASSEMBLY

## PRECISION HIGH-SPEED PROGRESSIVE DIES

Composidie specializes in the detailed design and manufacture of high-speed progressive dies. Highly trained professional tool and die makers with more than 20 years of experience utilize our precision manufacturing resources to produce the highest quality progressive dies to exacting standards and tolerances.

The Composidie advantage includes:

- In-House Stamping
  - Allows for Constant Performance Feedback
  - Leads to Any and All Needed Improvements of Die Design
- Carbide and High-Speed Steel Cutting and Forming Components
- Capability of Building Steel Tools
- Flexibility to Design to Customer Standards
- Assistance With Part Development



## SOFTWARE

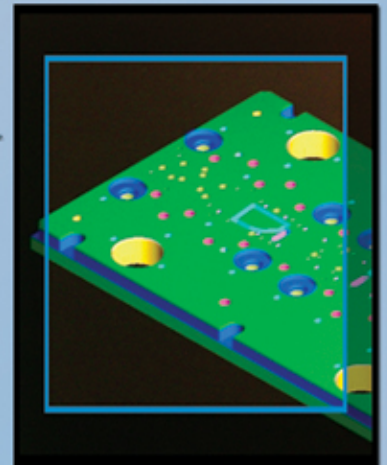
Updated SolidWorks, Auto CAD and Visionael programs allow us to design in, work with, import and export all common file formats.

## EXPERIENCE

- High-Speed, Progressive Stamping & Forming Dies
- High-Speed Bandolier Dies
- Compound Dies
- Assembly Dies
- Prototype Dies

## ADVANCED TECHNIQUES

Composidie has the ability and experience to utilize state-of-the-art techniques in computerized feedback & tracking, in-die monitoring and in-line post-stamping processing.



## RAPID PROTOTYPING & ENGINEERING

Experience, technology, and innovation fuel our engineering and product design capabilities.

We engineer custom prototyping solutions to fit our customers' volume requirements. With Composidie's broad engineering support, we excel at becoming involved on the front end and assisting in product development from prototype through each step of production.

Our array of capabilities include:

- Etched Parts
- Wire EDM
- Water Jet
- Prototype Tooling
  - Class B & C Designs Utilizing Standard Die Sets
  - Single Station Mock-Up Tooling

